



Beneath the surface: Real-life application of AI **Aqkva AI Conference**

04 June 2025

Reinhard Fellner | Director of Customer Success & Insight

 **Aquabyte®**

Aquabyte is the market leader in **camera-based biomass, welfare and sea lice monitoring** in salmon aquaculture

- Offices in Norway, USA, and Chile
- We operate in all major salmon farming regions
- Our customers are the largest salmon farming companies in the world
- Three species: Atlantic salmon, Coho salmon, and Rainbow trout
- Our employees are experts in aquaculture, marine biology, computer vision, and artificial intelligence

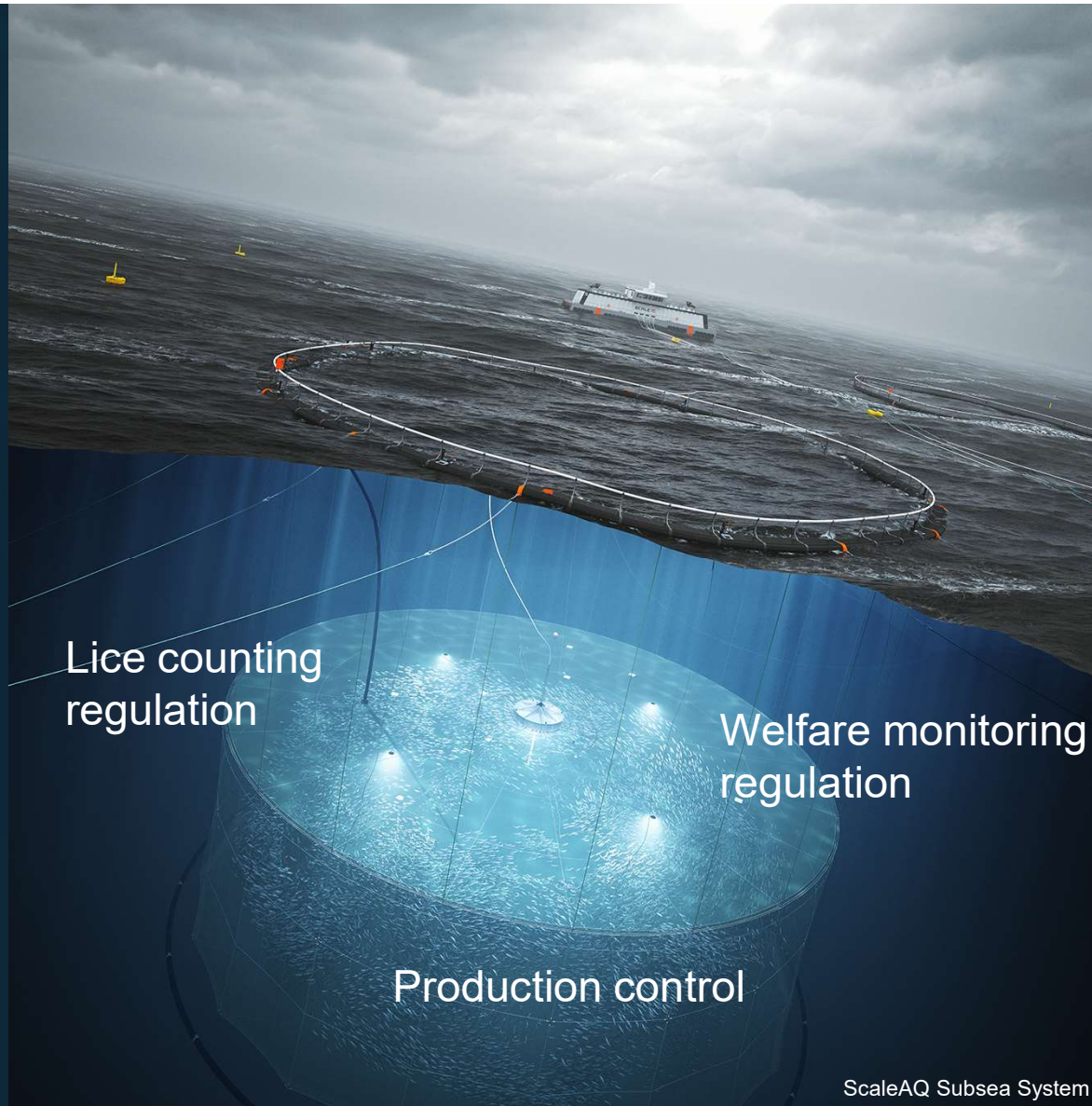


 Aquabyte®

Artificial Intelligence in aquaculture today

- Surfaces previously unavailable or unattainable data
 - Real growth patterns
 - Size distribution
 - Behavioral data and population dynamics
- Automates monitoring of lice, externally observable welfare, and stress
- Soon - Exceeds human performance in repetitive tasks and complex decision making





Lice counting
regulation

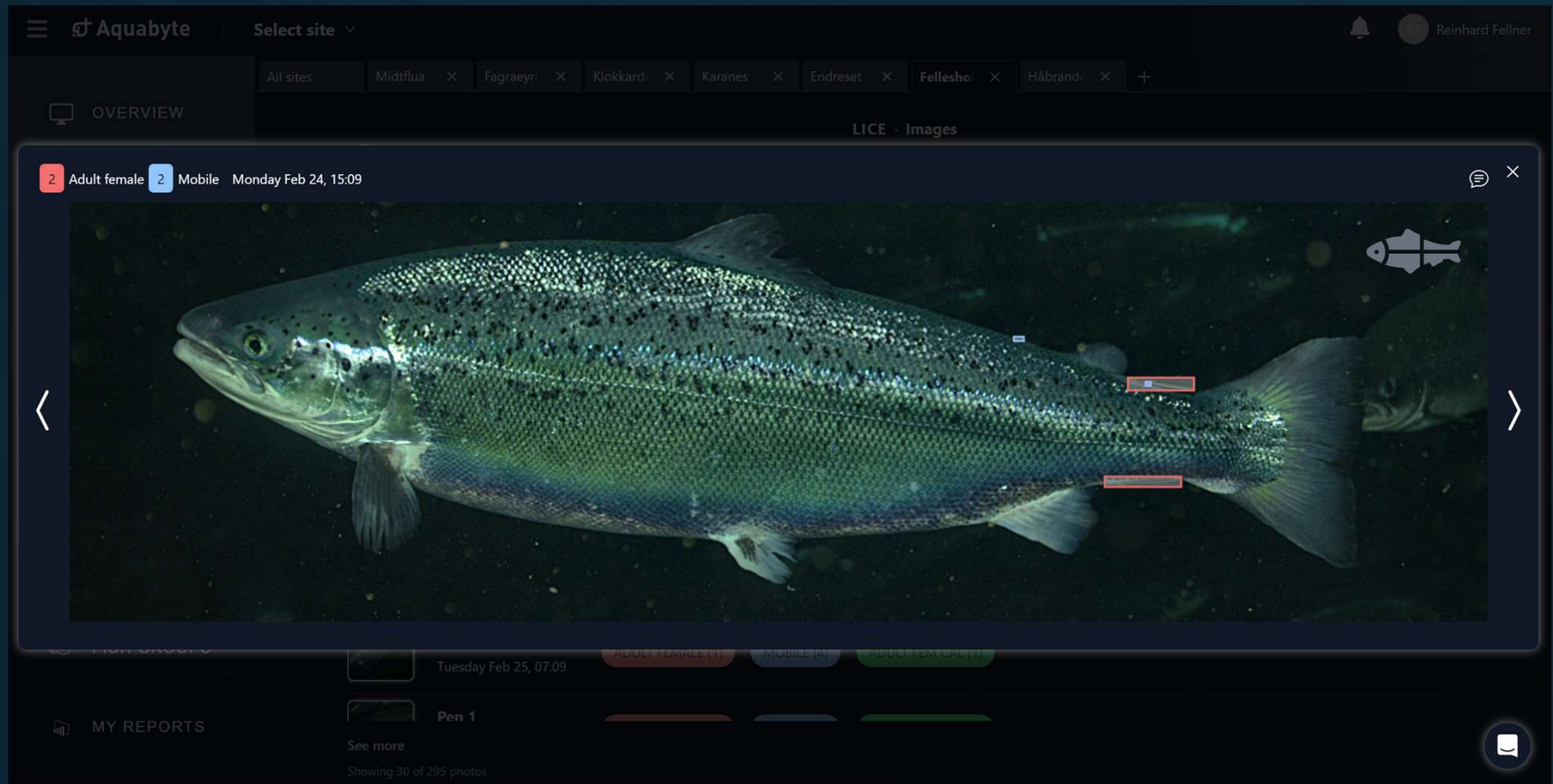
Welfare monitoring
regulation

Production control

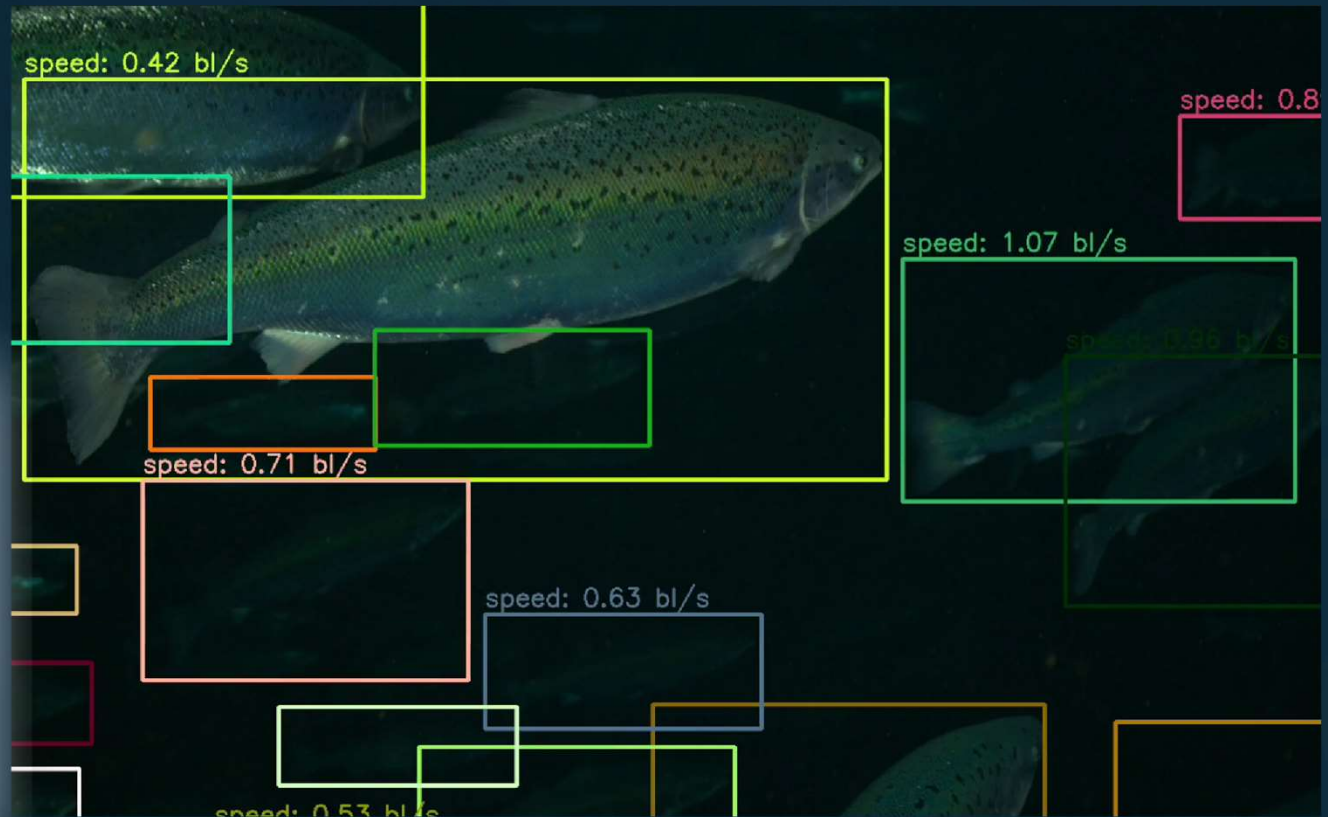
ScaleAQ Subsea System

 **Aquabyte®**

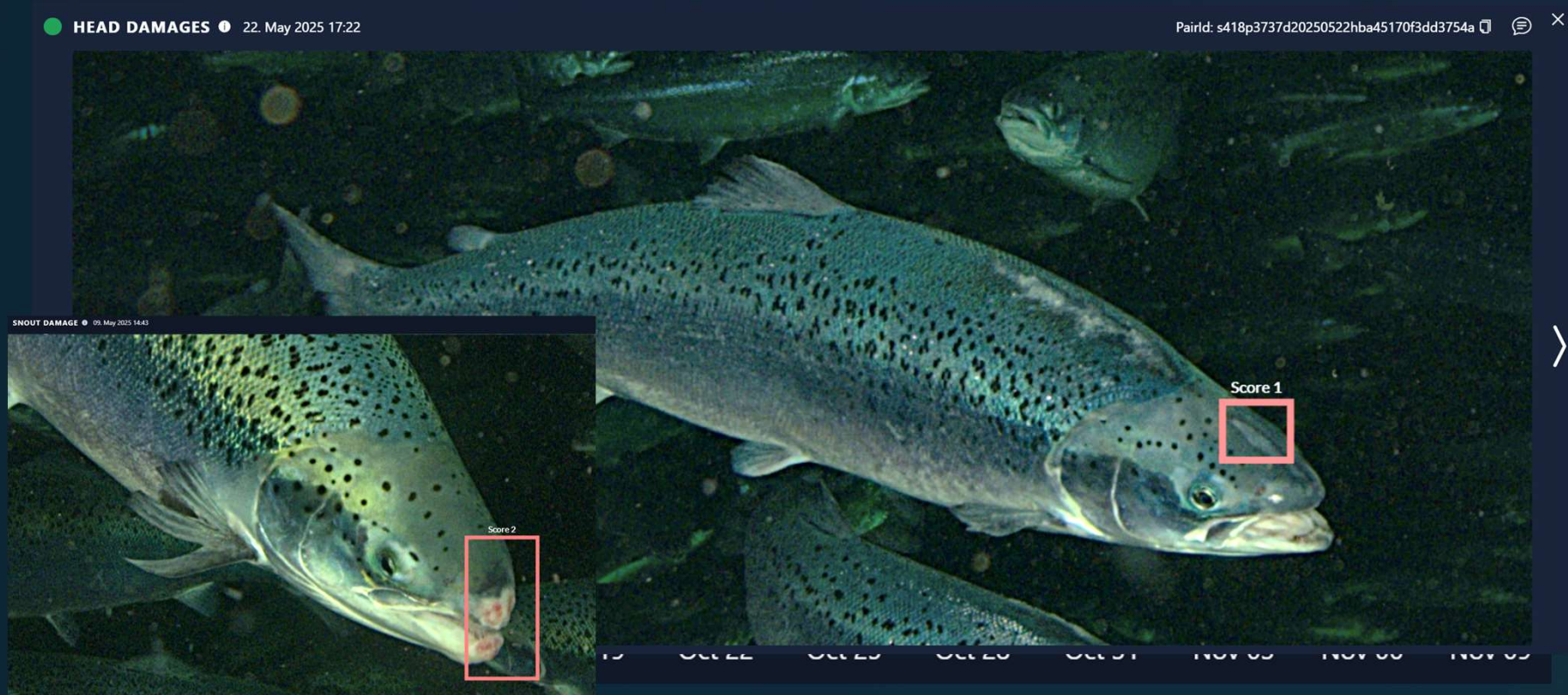
Automatic lice counting



Automatic swim speed monitoring



Automatic welfare monitoring



Automatic foreign fish detection

Pen 5

Saturday May 24 23:53

Hourly swim speed
0.87 bl/s

Hourly swim tilt
4°

Daily Breathing
0.1

Behavioural data are based on the analysis of many video files. The behavior shown in this video may therefore differ from the presented data.

8°C 27.8 m 81% 33.4‰

0:27 / 0:29



TAKK

Reinhard Fellner

Director of Customer Success & Insight

+47 465 41 286

Reinhard.Fellner@aquabyte.ai